

# REBLOC RB100SF\_8

standard element

Area of application  
**Permanent system**

Construction  
**Free standing  
with position securing**



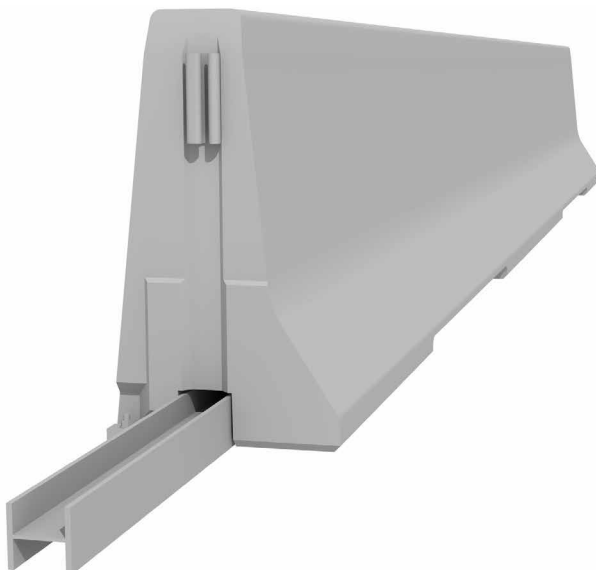
tested according to EN1317-1/2



Containment level **H4b** (covers H3, H2, H1, N1, T3, T2 and T1)  
Working width **W4** (covers W5, W6, W7 and W8)  
Impact severity level **ASI B**

## Product features & Advantages

- High containment level (H4b) thanks to shear force beam between the concrete elements
- Usage on bridge constructions
- Reduced collision design forces imparted on the bridge deck due to free standing construction



The special REBLOC<sup>®</sup> RB100SF\_8 system with low working width is ideal for the application on new bridge structures as well as for the refurbishment of existing bridges. The highest containment level H4b offers best possible protection and even restrains the impact of a 38 t lorry driving at 65 kph (TB81 according to EN1317-2).

Car passengers are also well protected (ASI B). The position securing guarantees the alignment of the elements on the bridge structure. The position securing is installed every 8 m and prevents damages to the bridge structure due to the flexibility of the system.

Special dilatation elements for bridge expansion joints were part of the test according to European Standard EN1317-1/2. These elements take up movements caused by temperature fluctuations.

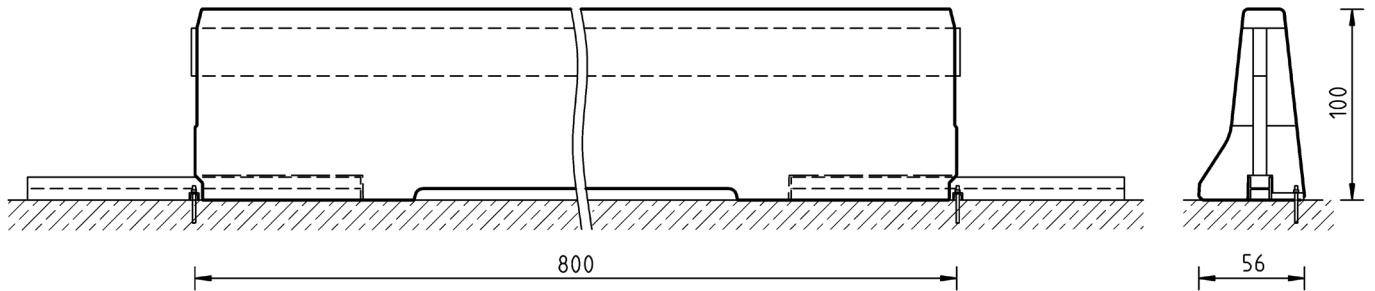
## REBLOC RB100SF\_8

standard element



tested according to EN1317-1/2

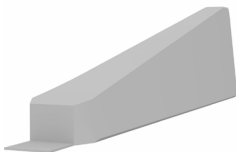
### Technical data



all dimensions in cm

Containment level	H4b
Working width	W4
Impact severity level	ASI B
Construction	free standing with position securing (1 x M16 adhesive anchor in concrete per element)
Terminal elements	RB100SF_4TR, RB100SF_4TL (4 x M24 adhesive anchor)
Dimensions L x W x H in cm	800 x 56 x 100 cm
Weight/element	6.000 kg
Pcs./truck (24 t)	4 pieces
Minimum installation length	96 m (without terminal elements)
Curve radius	$r \geq 350$ m, smaller radii on request
Concrete quality	C30/37, exposure class according to national requirements
Coupling/exposed steel parts	fully integrated, exposed parts hot-dip galvanized
CE-certification	✓

### System element - combinable



Terminal element  
RB100SF\_4T



Dilatation element  
RB100SF\_2.35EXM